

imagen the possibilities

Superior science
Beautiful results

imagen® is dedicated to continuously improve the quality of dental patient care by enabling dental laboratories with the most advanced manufacturing processes, equipment, and materials. By combining patented rapid manufacturing technologies with FDA approved materials, imagen has set new benchmarks for productivity, quality, and aesthetics in the dental industry. **imagen the possibilities!**



 **imagen**[®]
AN EX ONE COMPANY
www.X1-imagen.com

“Automating will help labs
be competitive in price and quality”

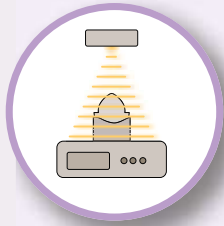


Benefits:

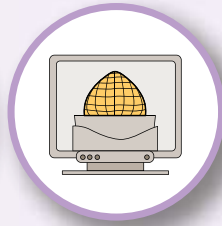
- Increases productivity
- Improves product consistency and quality
- Reduces labor and training costs
- Eliminates scrap material cost
- Allows full product traceability



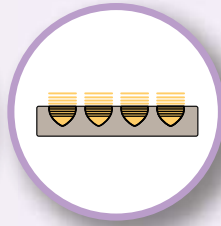
imagen® digital process



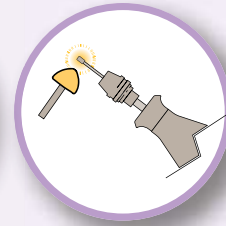
SCANNING



VIRTUAL
WAXING



PRINTING
COPINGS



FINISHING

Composition

Element	imagenBright™	imagenNatural™
Au	87.2	72.5
Pt	4.5	-
Pd	5.8	20
Ag	2.5	-
In	-	7.5
Ir	trace	-
Ru	-	trace
Totals	100.0	100.0

Finishing Instructions

Metal finish coping

- Use a diamond or carbide bur
- Do Not use a green stone
- Do not finish thinner than 0.3 mm

No degassing required

No bead blasting required

Opaque coping

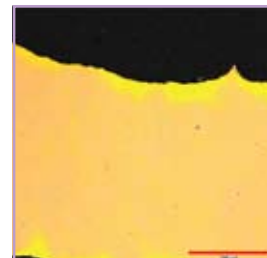
- 1 slurry coat of opaque
- 1 thicker coat of opaque

Add porcelain or press

- Alloy CTE is 14.1

Porosity

Material	Least Porous Area (%)	Average Porosity (%)	Most Porous Area (%)
imagenBright™	0.013	0.073	0.349



imagenBright – Polished Unetched

imagen®
AN EX ONE COMPANY

United States

Corporate Headquarters
The Ex One Company, LLC
8075 Pennsylvania Avenue
PO Box 1111
Irwin, PA 15642
USA

T: 724.863.9663

F: 724.864.9663

x1-imagen.com