

# DALE DENTAL

## PRODUCT TECH SPECS

### Procera® Abutments

**MANUFACTURER** – Nobel Biocare, www.nobelbiocare.com, 800.933.8100

**YEAR LAUNCHED** – 2000

**AVAILABLE AT DALE DENTAL SINCE** – 2000

**CERTIFICATIONS** – Dale Dental is a Certified Nobel Biocare Laboratory

**DESCRIPTION** – The Nobel Biocare Implant/Abutment products are organized according to a “platform concept”, which facilitates treatment planning.

**Narrow Platform (NP)** – NP components have been designed for situations in which there is limited inter-dental space or a narrow chest. Should not be used for single replacement.

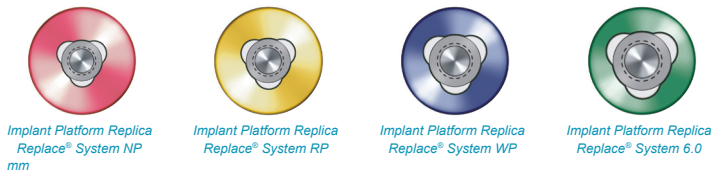
**Regular Platform (RP)** – RP components have been designed for cases ranging from single anterior tooth loss to complete edentulism.

**Wide Platform (WP)** – WP components are designed for use where additional loading can be expected or whenever a wider diameter implant/abutment post is considered preferable.

**Straumann® System (not pictured)**  
Octagon – 4.8 mm interface

**Brånemark System®**  
NP – 3.5 mm interface  
RP – 4.1 mm interface  
WP – 5.1 mm interface

**Replace® System**  
NP – 3.5 mm interface  
RP – 4.3 mm interface  
WP – 5.0 mm interface  
6.0 – 6.0 mm interface



**Also available in Straumann System Octagon 4.8mm interface**

Learn more at [www.DaleDental.com](http://www.DaleDental.com)

### RESTORATION SELECTOR SMARTCHART

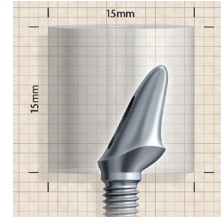
Indications – Edentulous Areas		
<b>Material</b> Aluminum, Zirconia, Titanium	<b>Flexural Strength</b> 680 MPa, 1200 MPa	<b>Abutment Color</b> Translucent, White, Grey
<b>Translucency</b> High, Medium, None	<b>Cements</b> Contact manufacturer for details	<b>Turnaround</b> 5 Day

### LABORATORY PREPARATION

Laboratory will need to order sleeve and screw from Nobel Biocare. Send Dale Dental the adjusted sleeve and screw. You may adjust the plastic sleeve with wax, metal or acrylic.

### Wax-ups

Your wax-up can be fabricated at any angle, taper, finish line, width and cross sectional form.



Freehand design in a 15 x 15 mm imaginary cylinder. You decide on the angle, taper, finish line, height, width and cross-sectional form.



Procera Abutments can be made in either ceramic or titanium. A Procera abutment in aluminum oxide is shown. Notice the natural tooth color.

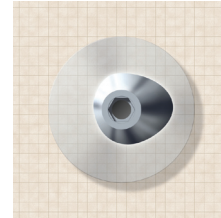
### Design Potential

Procera CADDesign lets you customize abutments to match the needs of each individual patient. The machined interface of Procera Abutment fits the

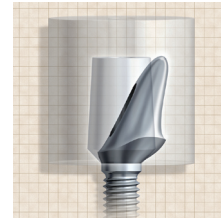


implant precisely and casting irregularities are eliminated.

For molars the potential for a more natural and wider design is advantageous. A less rounded form, like that of the natural tooth, can easily be created.



Off-center designs can easily be created to compensate for odd implant alignment. Asymmetric shapes in the cross-sectional plane, oval, triangular, quadratic, etc. can be created to mimic the natural tooth form.



The finish line and emergent profile can be individualized more dramatically with Procera Abutment compare to conventional components.

### Model Prep

**Packaging** – Please send working and opposing models

**Do not send** – Impressions



## COMPLETING THE RX

- Write in your patients name and choose a turnaround time
- Indicate tooth numbers
- Select Procera from the list by checking the corresponding box
- Indicate the abutment type
- Select Elite service level (optional)
- Go order a coping for your abutment, please complete a separate Rx and include with your case

**ELITE LEVEL SERVICE** – Elite Level Service for Procera abutments gives your case priority status throughout the manufacturing process. Included in this are:

**Enhanced Customer Service and Technical Support** – Hallmarked by an even greater degree of customer interaction.

**Priority Sorting Upon Receipt** – Using Elite urgent stickers, this initial presort moves Elite cases into production first on that day.

**Guaranteed Availability** – Guaranteed capacity allocations on all machinery and resources.

**Redundant Technical Checkpoints** – Case attributes are observed frequently at various stages of production.

**Additional outbound insurance** – At no extra cost, this added benefit covers your articulators or other valuable items which may be included in your case.

*Please see the Dale Dental Pricing Sheet for pricing details.*

**RECEIVING YOUR CASE** – When you receive your abutment please double check on working model to verify alignment..

*If you have any questions or for more information please contact our technical service support at 888.GET.DALE (888.438.3253).*

## CLINICAL PREPARATION

*If you need information for your dentist, please contact the system manufacturer or a Dale Dental customer service representative at 888.GET.DALE (888.438.3253).*

## THANK YOU FOR CHOOSING DALE DENTAL

*Since 2000, Dale Dental has worked hard to earn your business and – more importantly – your trust. From the latest products to the best customer service, here are just a few of the ways we continue to be your resource for copings and bridge frameworks.*

**Secure & Non-competitive** – We do not compete for your dentist clientele because we don't work with dentists. We are America's first dental lab exclusively for dental labs.

**Experienced** – Our specially trained technicians maintain an in-depth system knowledge and are committed to finishing cases that meet or exceed exacting manufacturer standards.

**Consistent & Reliable** – With an on-time delivery of over 99% and inbound and outbound email notifications sent daily with delivery tracking hyperlinks for each case, your assured of keeping your customers satisfied.

**Informative & Progressive** – Login to our website to see the status of your cases or provide feedback through on-line quality control cards that instantly display your feedback to the technicians responsible for your cases.

**Certified** – Dale Dental is the first outsourcing dental laboratory in the United States and among the first worldwide to obtain the ISO 9001:2008 certification. We are also a CDL laboratory and employ CDT technicians in many supervisory Positions.

**Friendly** – You can always count on our welcoming, professional and well-informed staff to answer questions about the products and services we offer.

*At Dale Dental, we know you have choices. And we're proud you've chosen us.*

